



2nd Floor Vaulted Office Suites
Suite 260: 2,610 SF & Suite 275: 1,160 SF

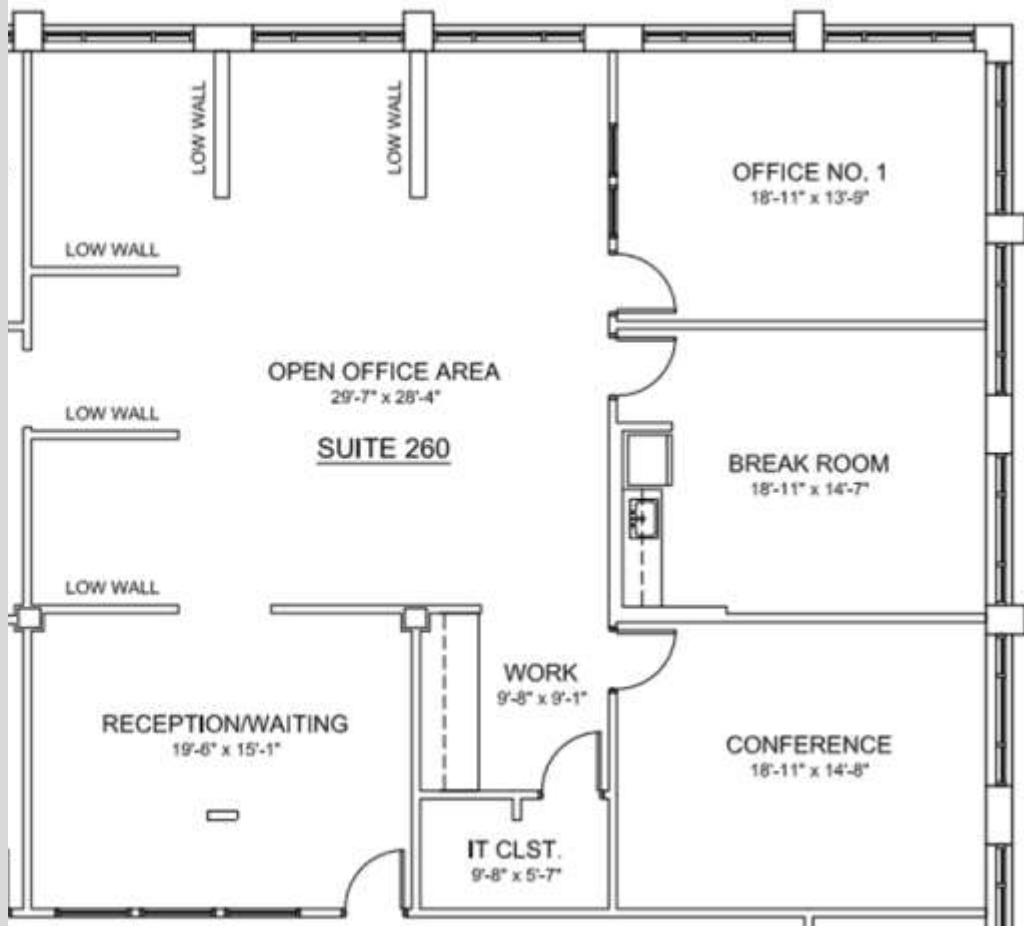


IROQUOIS PROFESSIONAL CENTER

- Easy access to I-355 and I-88
- One block south of Ogden & Naperville Rd.
- Newly remodeled Common Areas
- No CAM or Taxes!
- Elevator Access to 2nd Level
- Open Vault Ceiling on 2nd Level
- Skylights Providing Ample Natural Light
- LL Storage Available upon request
- Oversized Parking Lot

2nd Floor Private Office Suite

1300 Iroquois Ave. Naperville, IL 60563



2,610 Rentable Square Feet

Open Natural Cedar Ceilings

End Unit with New Windows

Center Skylight Roof Line

