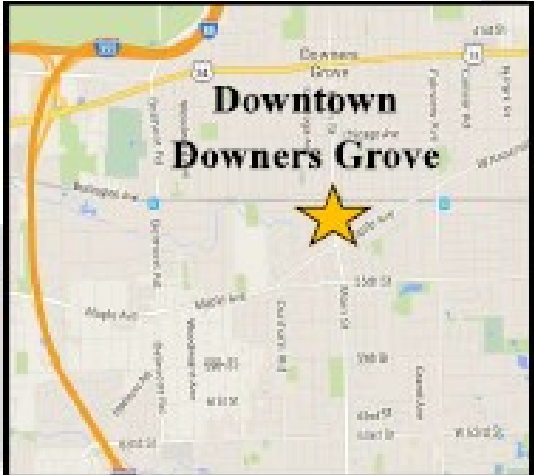


PRIME DOWNTOWN DOWNERS GROVE

3,600 SF Office For Lease



	<u>1 Mile</u>	<u>3 Miles</u>	<u>5 Miles</u>
Population	14,643	101,916	247,686
Metra Commuters Per Day	2500	Ave HHI \$110K	
<i>300 New DT Residential Units Opened Spring 2019</i>			



5157 Main Street, Downers Grove, IL

Prime Main Street Downtown

Downers Grove Location

Steps to parking garage! Walk to Metra Train Station, Starbucks, Peet's Coffee, Library, Post Office, Public Parking Tivoli Theater, Shops & Restaurants. Elevator Access to 2nd Level.



Exterior Private Balcony



Schulz
PROPERTIES, LTD.

Theresa Schulz
tschulz@schulzproperties.com
www.schulzproperties.com

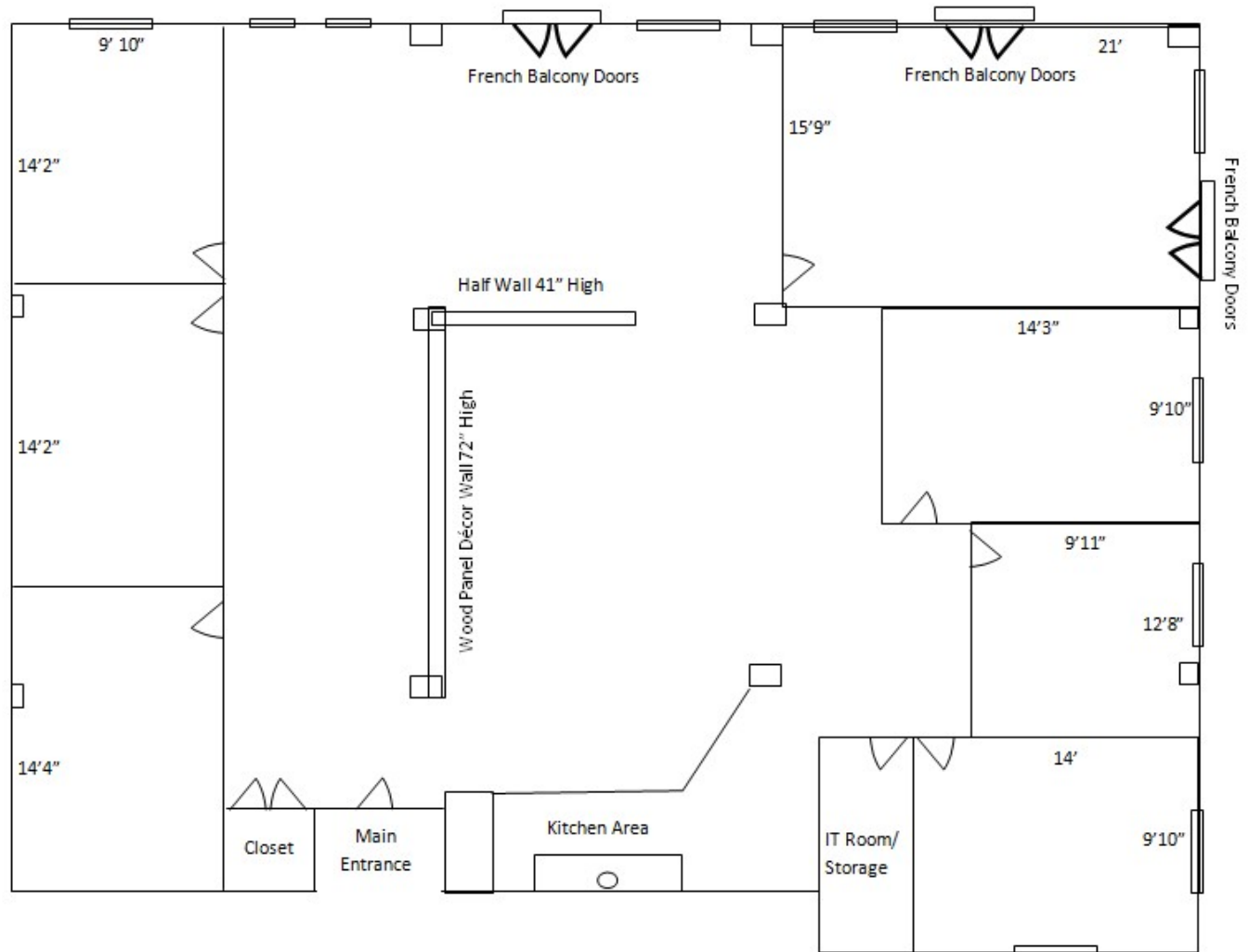
947 Maple Ave, Downers Grove, IL 60515

MAIN: 630.737.1200 * CELL: 630.453.1230

5157 Main Street, Downers Grove, IL

5157 Main Street - Suite 200

Downtown Downers Grove



Theresa Schulz
tschulz@schulzproperties.com
www.schulzproperties.com